



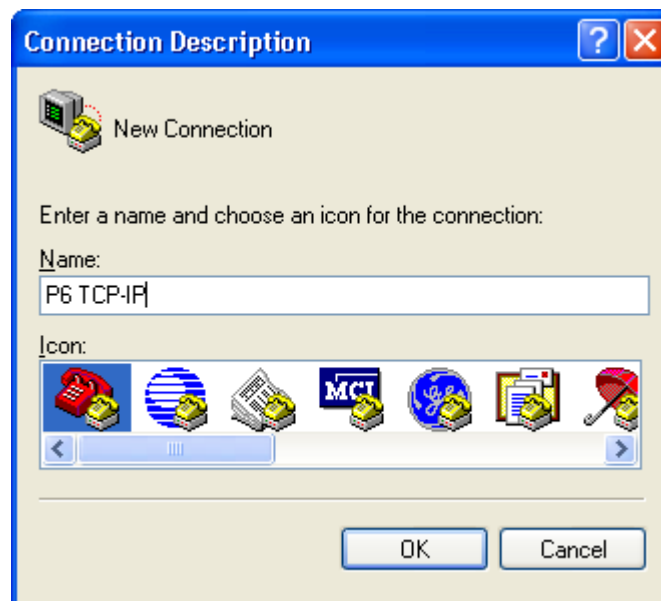
HyperTerminal is available on most PCs running Windows. It is more flexible than using the Windows Telnet utility. The following describes how to use and setup HyperTerminal to use with Point Six Wireless TCP/IP products.

The typical way to start HyperTerminal is: click Start on the Taskbar/All Programs/Accessories/Communications/HyperTerminal.

Once a connection is saved you can access it by: Start on the Taskbar/All Programs/Accessories/Communications/HyperTerminal/*connection name*.

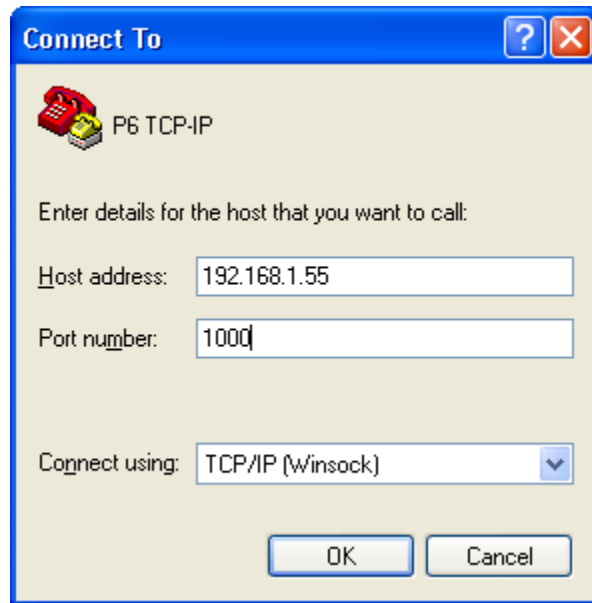
## Setup HyperTerminal for TCP/IP Communications

Enter name for the connection:



Enter a descriptive name for the connection (ex: P6 TCP-IP)

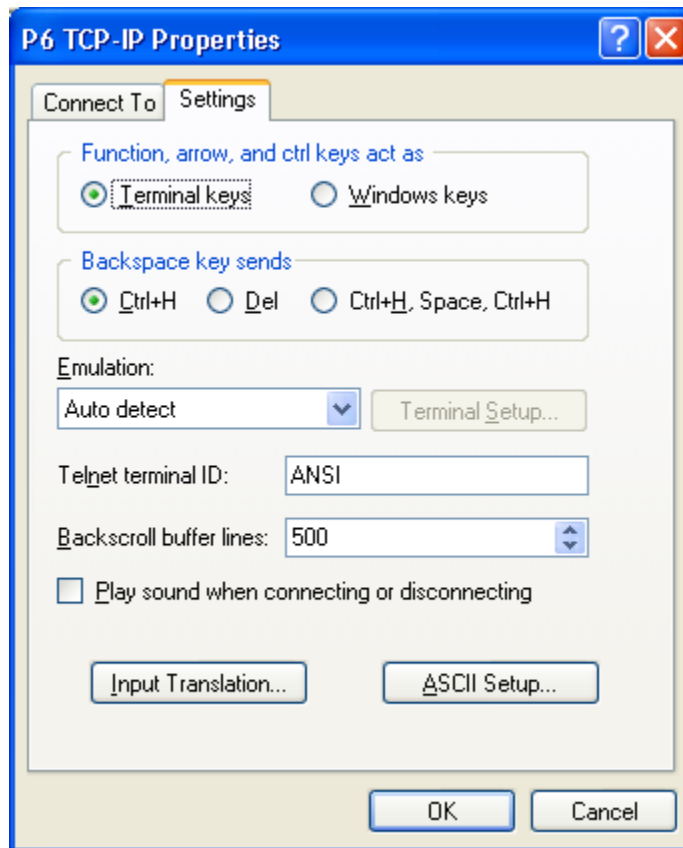
## Enter communication parameters:



In the “Connect using” field, select “TCP/IP (Winsock)”. Enter the “Host Address” and “Port number”. From the factory the P6 products typically default to a host address of 192.168.1.55 and port number of 1000.

## Change how data is sent and displayed:

Select File from the main menu and then select Properties. From the Properties window select the Settings tab. From the Settings tab select the ASCII Setup button.

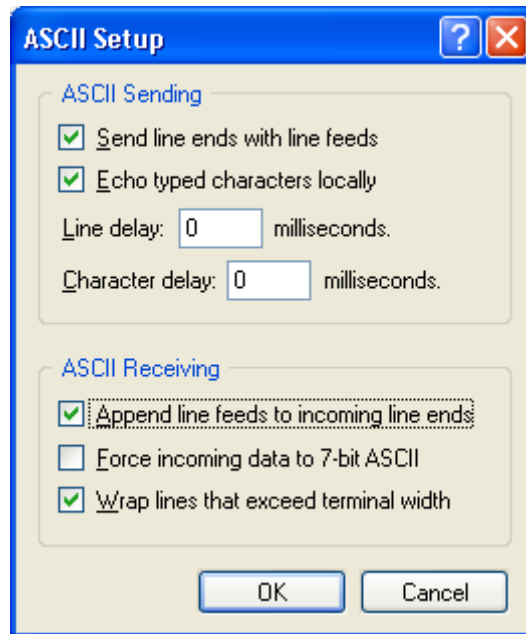


From the ASCII Setup window, check the following fields:

“Send line ends with line feeds”

“Echo typed characters locally”

“Append line feeds to line ends”



Click “OK” when finished.

HyperTerminal should be showing the main terminal window.

# Setup HyperTerminal for Serial Communications

Enter name for the connection:

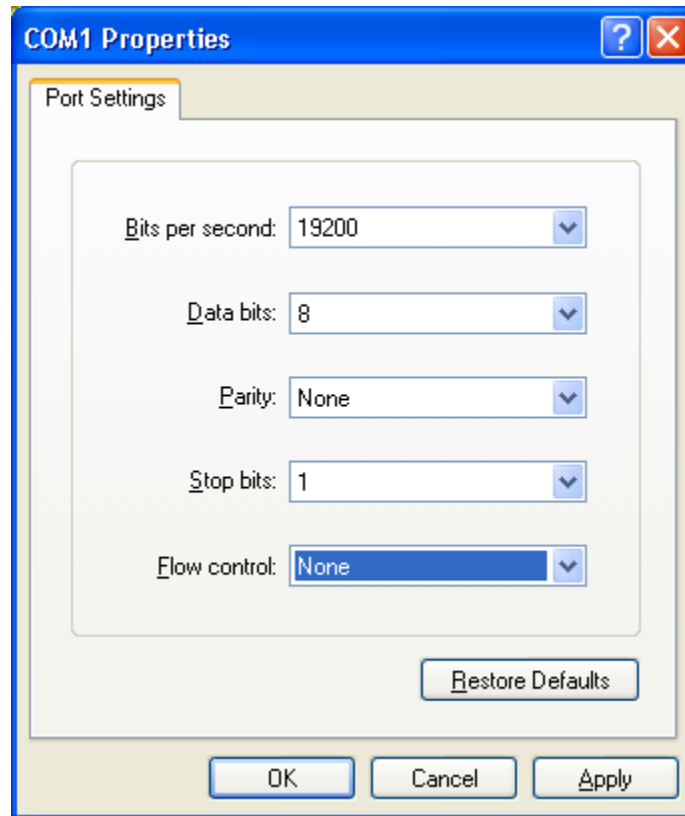


Enter a descriptive name for the connection (ex: P6 COM1)

Select communication port:



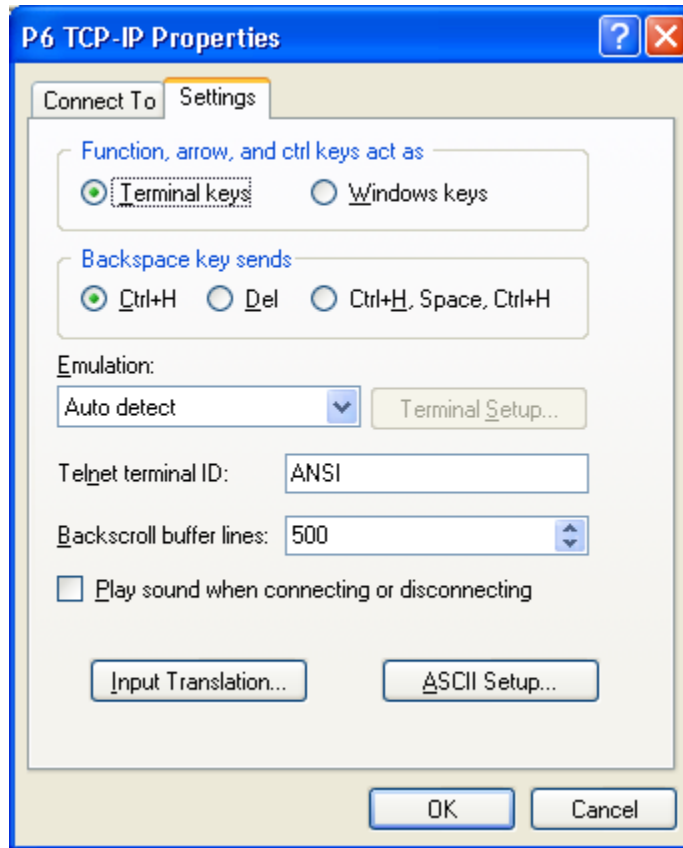
## Select communication settings:



Typical baud rate is 19200. Set Data bits to 8, Parity to None and Stop bits to 1. Make sure that Flow control is set None. If Flow control is not set to None, then Hyperterminal may not send commands properly to the device.

## Change how data is sent and displayed:

Select File from the main menu and then select Properties. From the Properties window select the Settings tab. From the Settings tab select the ASCII Setup button.

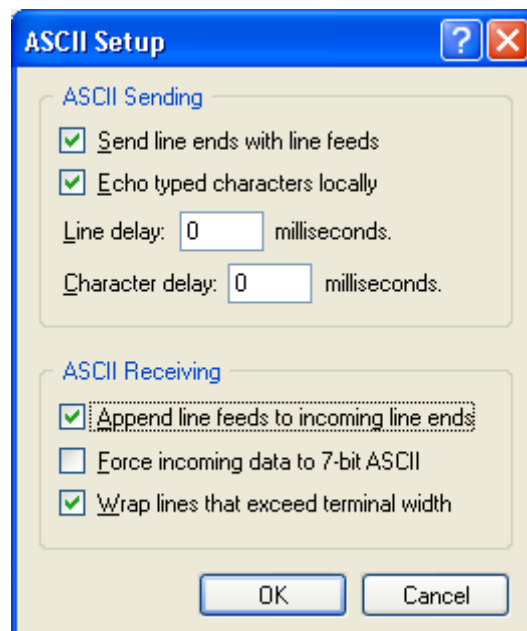


From the ASCII Setup window, check the following fields:

“Send line ends with line feeds”

“Echo typed characters locally”

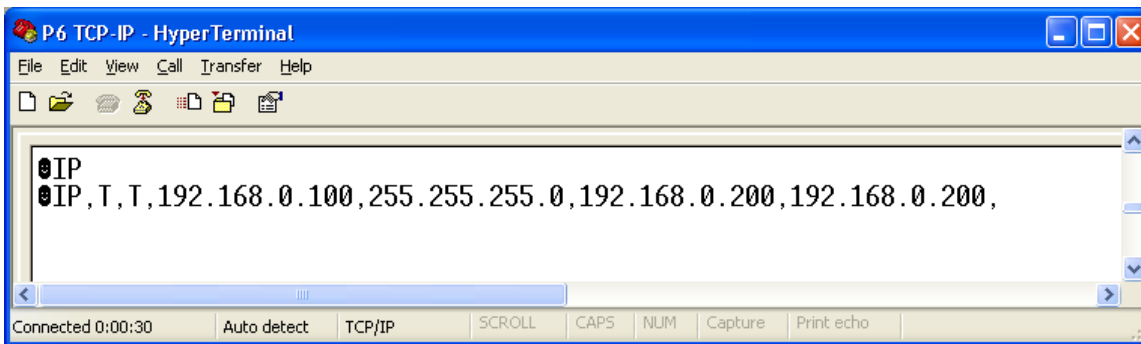
“Append line feeds to line ends”



Click "OK" when finished.  
HyperTerminal should be showing the main terminal window.

## Entering Commands and Receiving Responses

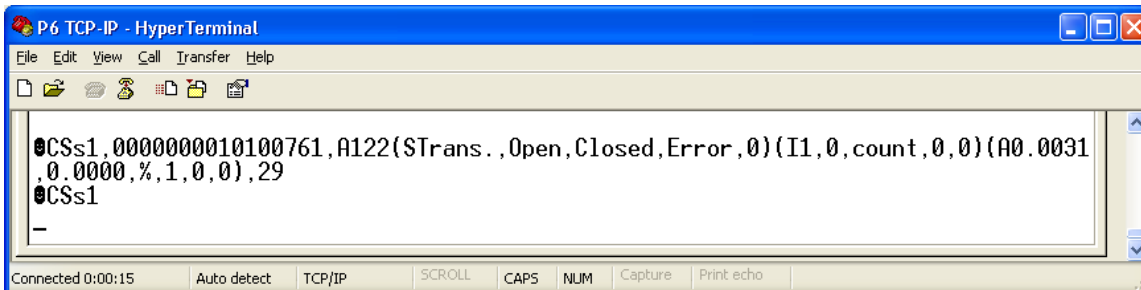
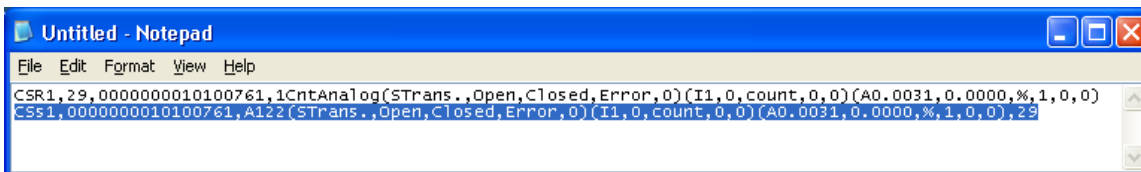
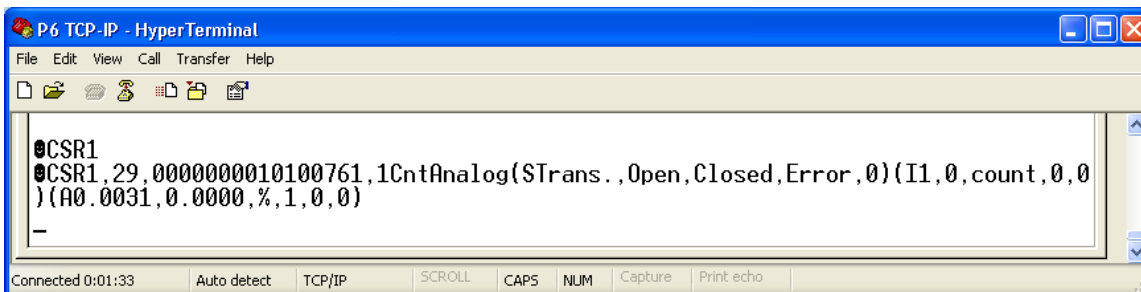
Each command starts with a <^B> and ends with a <CR>. To enter the <^B>, press the CTRL key and at the same time press the "B" key. To enter <CR>, press the ENTER key. When the command is entered, the response of the device should be displayed on the next line. To find out the IP address of the device, enter the following command <^B>IP<CR>.



## Editing Responses to Build Commands

For some commands it is easier to build the command with a text editor like Notepad and then Copy/Paste the command into the HyperTerminal terminal window. Here is an example of reading the sensor information from a Point Manager, editing the response to alter the fields and produce a new command to change the settings of the sensor.

Here is an example:



Note: HyperTerminal does not recognize the CTRL-V or CTRL-C key combinations. You have to use the Edit/Paste or Edit/Copy from the main menu.